

SECTION 27, T.7N., R.1E., S.L.B. & M.

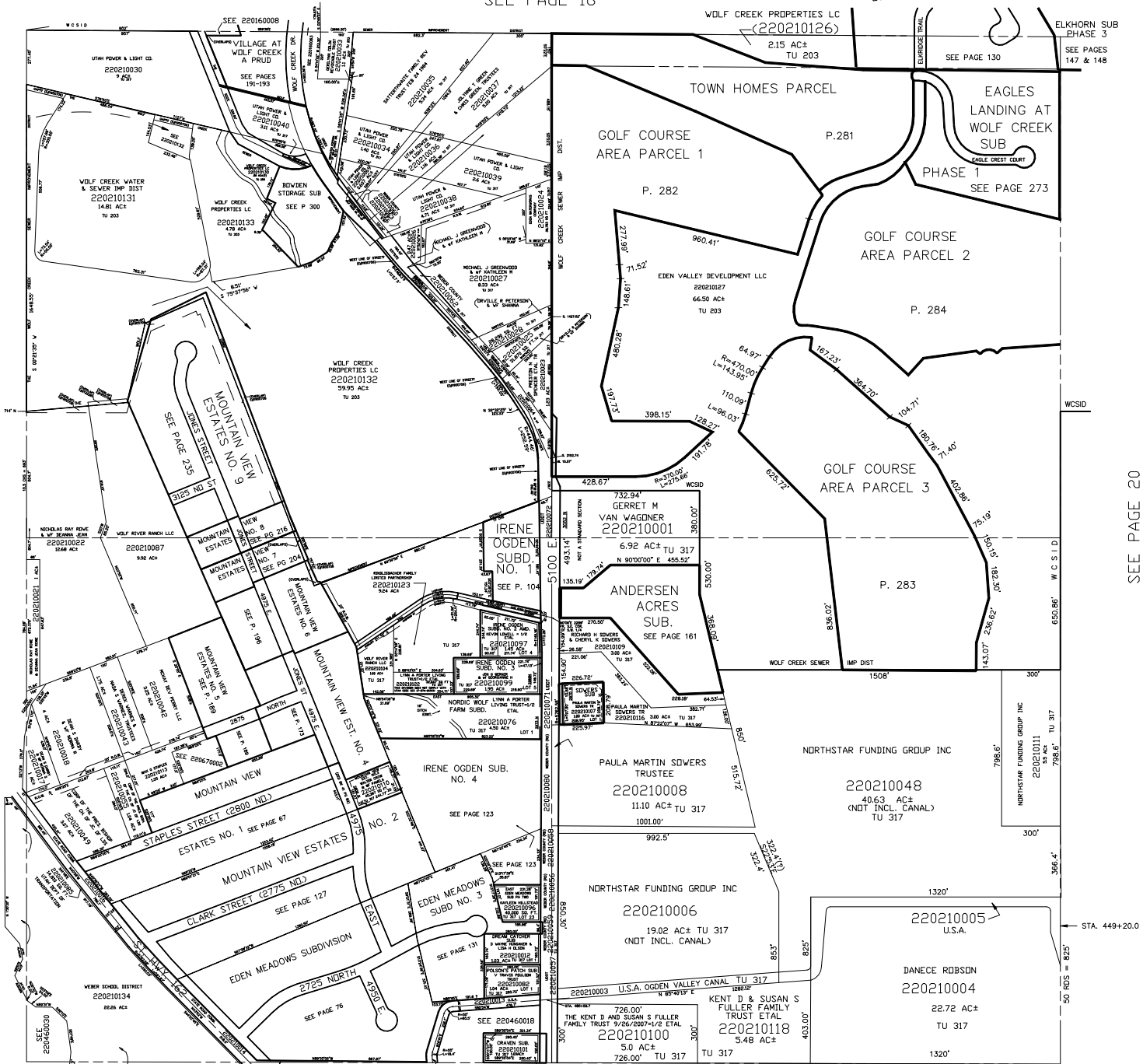
IN WEBER COUNTY

SCALE 1" = 400'

TAXING UNIT: 203, 317

SEE PAGE 16

ELKHORN SUB PH 2  
LOTS 24 TO 28 AMENDED



SEE PAGE 22

SEE PAGE 20

SEE PAGE 46

SEE PAGE 45

NOTE: THIS SECTION IS NOT A STANDARD